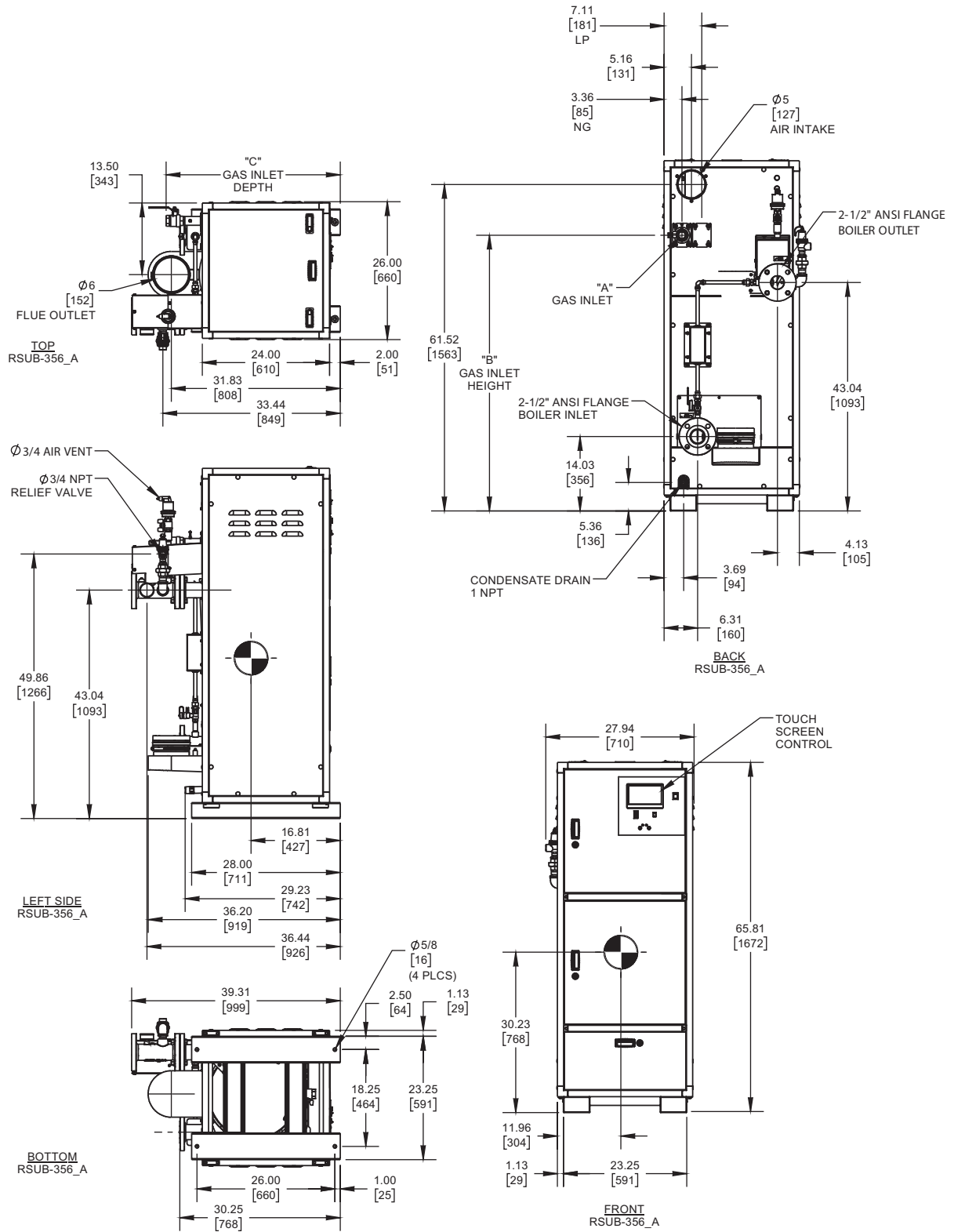


# ENCORE 850

Category II or Category IV Appliance  
(see Installation and Operation Manual for venting information)

## INDOOR UNIT



GAS OPTION	"A"	"B"	kPa
NG	1-1/4 NPT	51.96	32.83
LP	3/4 NPT	51.96	32.84

**Notes:**

1. Dimensions are approximate and should not be used to "rough-in" equipment.
2. Dimensions are subject to change without notice.
3. All dimensions are in inches [mm].
4. Symbol indicates center of gravity.

## BOILER CERTIFIED RATINGS & CAPACITIES

<b>Fuel Type</b>	Natural/Propane Gas	<b>Boiler FLA</b>	17.1 *
<b>Input BTU/hr.</b>	850,000 / 249 KW	<b>Boiler HP</b>	24.6
<b>Output BTU/hr.</b>	823,650 / 241 KW	<b>Min. Gas Pressure Required</b>	4" W.C.
<b>Electrical Requirements</b>	120 VAC/60 Hz/1PH (with neutral)	<b>Max. Gas Pressure Allowed</b>	14" W.C.
		<b>Operating Weight</b>	747 lbs. / 338.8 kg.

## BOILER TRIM & CONTROLS

<b>Main Gas Valve</b>	Dungs MBC	<b>Air Switch</b>	Huba
<b>Ignition Control</b>	Fenwal	<b>Flow Sensor</b>	SIKA
<b>Operating Control</b>	HeatNet®	<b>Blocked Flue Switch</b>	Cleveland NS2
<b>High Limit</b>	Jumo	<b>Blower Motor</b>	Ametek
<b>Relief Valve</b>	3/4" x 3/4" set @ 50 psi	<b>L.W.C.O.</b>	800

## A.S.M.E.

<b>ASME Sect IV Fire Side Htg Surface</b>	99.8 Sq. Ft. / 9.27 Sq. M.	<b>Design Data</b>	Max. 160 psig & 210°F
<b>ASME Sect IV Water Side Htg Surface</b>	127.87 Sq. Ft. / 11.88 Sq. M.	<b>Water Volume</b>	16.4 gal. / 62.1 Liters

\* Add circulator amps.

## BOILER TEMPERATURE RISE / PRESSURE DROP (Based on Full Input)

20°F / 11.1°C				30°F / 16.7°C				40°F / 22.2°C				50°F / 27.8°C				60°F / 33.3°C			
Flow Rate		Pressure Drop		Flow Rate		Pressure Drop		Flow Rate		Pressure Drop		Flow Rate		Pressure Drop		Flow Rate		Pressure Drop	
GPM	L/s	Ft	kPa	GPM	L/s	Ft	kPa	GPM	L/s	Ft	kPa	GPM	L/s	Ft	kPa	GPM	L/s	Ft	kPa
82.4	5.2	5.7	17.1	54.9	3.5	4.1	12.1	41.2	2.6	3.4	10.2	33.0	2.1	3.1	9.2	27.5	1.7	2.9	8.6

Flow GPM				Temp. Rise** (°F)				Vent Length (Equiv. Ft.)				Air Inlet Length (Equiv. Ft.)			
Min		Max		Min		Max		Min		Max		Min		Max	
27.5		82.4		20		60		6		100		0		100	

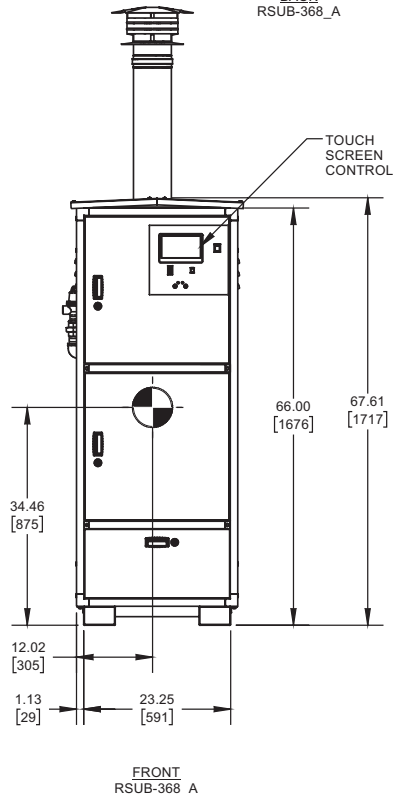
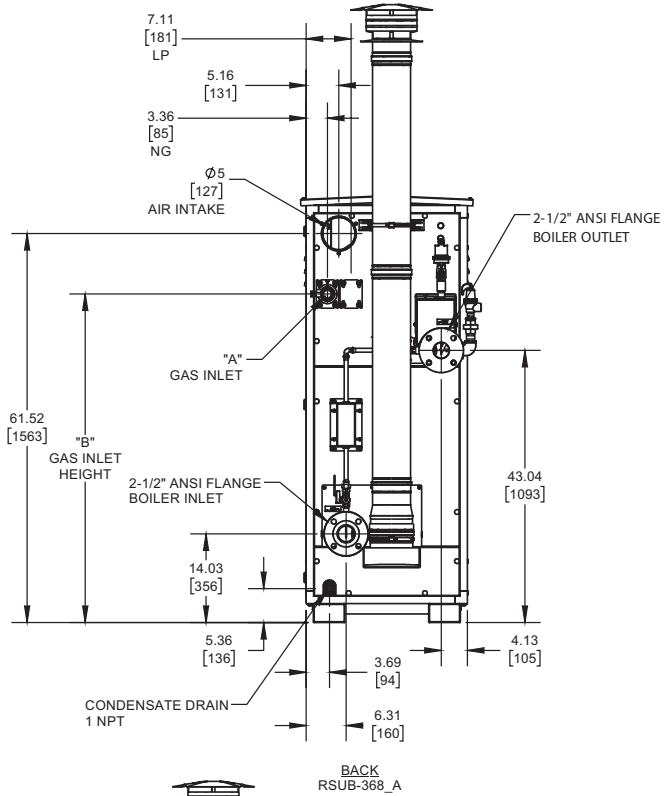
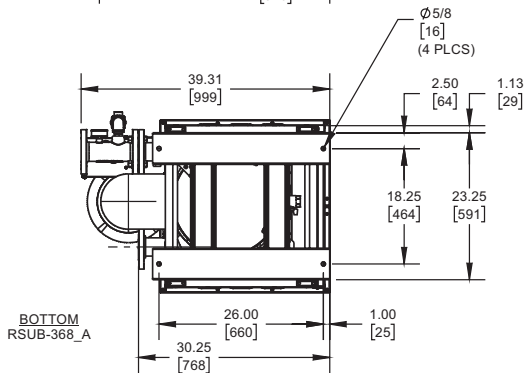
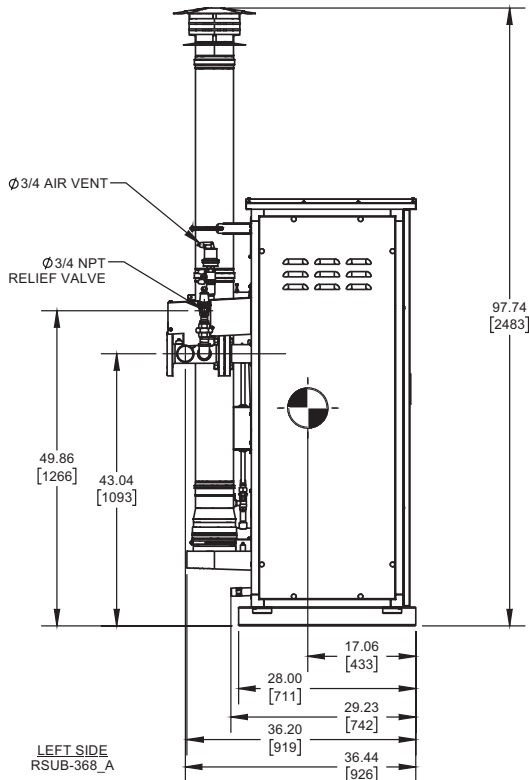
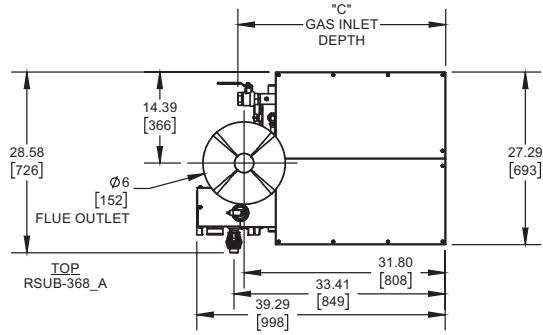
\*\* Min/Max delta t reflects boiler operation at full input. For applications requiring operation above/below these parameters please consult factory.

<b>REP FIRM</b>	_____	<div style="background-color: black; color: white; padding: 10px; font-weight: bold; font-size: 24px; margin-bottom: 10px;">ENCORE 850</div> <div style="font-weight: bold; font-size: 18px; margin-bottom: 5px;">Category II or Category IV Appliance</div> <div style="font-size: 12px; margin-bottom: 10px;">(see Installation and Operation Manual for venting information)</div> <div style="font-size: 24px; font-weight: bold; margin-bottom: 5px;">RBI®</div> <div style="font-size: 10px; font-weight: bold; margin-bottom: 5px;">RELIABLE. BOLD. INNOVATIVE.</div> <div style="font-size: 12px; margin-top: 10px;">A Division of Mestek, Inc. Westfield, MA 01085 (413) 564-5515</div>
<b>SUBMITTED BY</b>	_____	
<b>JOB NAME</b>	_____	
<b>ARCHITECT</b>	_____	
<b>ENGINEER</b>	_____	
<b>CONTRACTOR</b>	_____	
<b>DATE</b>	_____	

# ENCORE 850


Category II or Category IV Appliance  
(see Installation and Operation Manual for venting information)

## OUTDOOR UNIT



GAS OPTION	"A"	"B"	kPa
NG	1-1/4 NPT	51.95	32.83
LP	3/4 NPT	51.95	32.84

### Notes:

1. Dimensions are approximate and should not be used to "rough-in" equipment.
2. Dimensions are subject to change without notice.
3. All dimensions are in inches (mm).
4.  Symbol indicates center of gravity.

## BOILER CERTIFIED RATINGS & CAPACITIES

<b>Fuel Type</b>	Natural/Propane Gas	<b>Boiler FLA</b>	17.1 *
<b>Input BTU/hr.</b>	850,000 / 249 KW	<b>Boiler HP</b>	24.5
<b>Output BTU/hr.</b>	820,250 / 241 KW	<b>Min. Gas Pressure Required</b>	4" W.C.
<b>Electrical Requirements</b>	120 VAC/60 Hz/1PH (with neutral)	<b>Max. Gas Pressure Allowed</b>	14" W.C.
		<b>Operating Weight</b>	747 lbs. / 338.8 kg.

## BOILER TRIM & CONTROLS

<b>Main Gas Valve</b>	Dungs MBC	<b>Air Switch</b>	Huba
<b>Ignition Control</b>	Fenwal	<b>Flow Sensor</b>	SIKA
<b>Operating Control</b>	HeatNet®	<b>Blocked Flue Switch</b>	Cleveland NS2
<b>High Limit</b>	Jumo	<b>Blower Motor</b>	Ametek
<b>Relief Valve</b>	3/4" x 3/4" set @ 50 psi	<b>L.W.C.O.</b>	800

## A.S.M.E.

<b>ASME Sect IV Fire Side Htg Surface</b>	99.8 Sq. Ft. / 9.27 Sq. M.	<b>Design Data</b>	Max. 160 psig & 210°F
		<b>Water Volume</b>	16.4 gal. / 62.1 Liters
<b>ASME Sect IV Water Side Htg Surface</b>	127.87 Sq. Ft. / 11.88 Sq. M.		

\* Add circulator amps.

## BOILER TEMPERATURE RISE / PRESSURE DROP (Based on Full Input)

20°F / 11.1°C				30°F / 16.7°C				40°F / 22.2°C				50°F / 27.8°C				60°F / 33.3°C			
Flow Rate		Pressure Drop		Flow Rate		Pressure Drop		Flow Rate		Pressure Drop		Flow Rate		Pressure Drop		Flow Rate		Pressure Drop	
GPM	L/s	Ft	kPa	GPM	L/s	Ft	kPa	GPM	L/s	Ft	kPa	GPM	L/s	Ft	kPa	GPM	L/s	Ft	kPa
82.1	5.2	5.7	17.0	54.7	3.5	4.0	12.1	41.0	2.6	3.4	10.2	32.8	2.1	3.1	9.2	27.4	1.7	2.9	8.6

Flow GPM				Temp. Rise** (°F)				Vent Length (Equiv. Ft.)				Air Inlet Length (Equiv. Ft.)			
Min		Max		Min		Max		Min		Max		Min		Max	
27.4		82.1		20		60		6		100		0		100	

\*\* Min/Max delta t reflects boiler operation at full input. For applications requiring operation above/below these parameters please consult factory.

<p><b>REP FIRM</b> _____</p> <p><b>SUBMITTED BY</b> _____</p> <p><b>JOB NAME</b> _____</p> <p><b>ARCHITECT</b> _____</p> <p><b>ENGINEER</b> _____</p> <p><b>CONTRACTOR</b> _____</p> <p><b>DATE</b> _____</p>	<div style="background-color: black; color: white; padding: 5px; font-weight: bold; font-size: 1.2em;">ENCORE 850</div> <p><b>Category II or Category IV Appliance</b> (see Installation and Operation Manual for venting information)</p> <div style="text-align: center;">  <p><b>RBI</b>® A Division of Mestek, Inc. Westfield, MA 01085 (413) 564-5515</p> <p>RELIABLE. BOLD. INNOVATIVE.</p> </div>
---	--